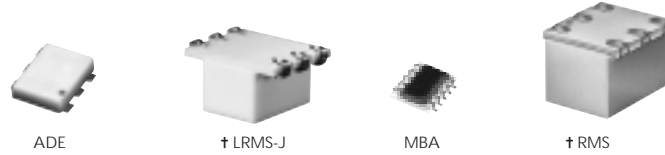


FREQUENCY MIXERS

Surface Mount



Low LEVEL 200 kHz to 5900 MHz

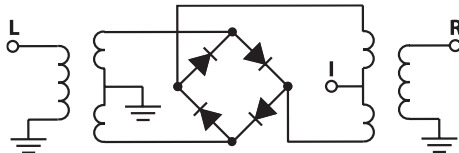


MODEL NO.	LO LEVEL dBm	RF @ 1dB Comp. Typ. dBm	FREQUENCY MHz		CONVERSION LOSS dB				LO-RF ISOLATION, dB						LO-IF ISOLATION, dB						IP3 @ center band Typ. (dBm)	CASE STYLE	CONNECTION	PRICE \$
			LO/RF f_L-f_U	IF	Mid-Band \bar{x}	σ	Max.	Total Range Max.	L Typ.	M Typ.	U Typ.	L Min.	M Min.	U Min.	L Typ.	M Typ.	U Typ.	L Min.	M Min.	U Min.				
◆ ADE-1L**	+3	0	2-500	DC-500	5.2	0.1	7.2	8.0	68	50	55	30	44	30	55	40	45	30	35	25	16	CD542	ht	3.95
◆ ADE-3L**	+3	-3	0.2-400	DC-400	5.3	.01	6.5	9.0	58	50	47	34	38	28	55	50	38	25	30	20	10	CD636	ht	4.25
◆ MBA-10L*	+3	0	800-1000	DC-200	8.0	0.1	—	9.5	20 (typ.) 13 (min.)						15 (typ.) 8 (min.)						9	SM2	ld	6.95
◆ MBA-10VL*	0	-3	800-1000	DC-200	7.4	0.1	—	9.8	18 (typ.) 14 (min.)						14 (typ.) 8 (min.)						3	SM2	ld	5.95
◆ MBA-15L*	+4	0	1200-2400	DC-600	6.5	0.1	—	8.5	27 (typ.) 15 (min.)						20 (typ.) 10 (min.)						10	SM2	ld	6.95
◆ MBA-18L*	+4	-1	1600-3200	DC-500	6.5	0.15	—	8.9	24 (typ.) 17 (min.)						16 (typ.) 10 (min.)						8	SM2	ld	6.95
◆ MBA-25L*	+4	0	2000-3000	DC-600	6.2	0.15	—	8.6	28 (typ.) 18 (min.)						15 (typ.) 7 (min.)						10	SM2	ld	6.95
◆ MBA-35L*	+4	0	3000-4000	DC-700	5.5	0.1	—	8.5	26 (typ.) 20 (min.)						17 (typ.) 7 (min.)						9	SM2	ld	6.95
◆ MBA-591L*	+4	+1	4950-5900	DC-1000	7.0	0.1	—	9.0	35 (typ.) 25 (min.)						26 (typ.) 17 (min.)						15	SM2	le	6.95
◆ LRMS-2LJ	+3	-3	800-1000	DC-200	7.0	0.2	—	8.4	24 (typ.) 16 (min.)						20 (typ.) 12 (min.)						—	QQQ569	w	6.95
◆ LRMS-5LJ	+3	-3	400-1400	DC-800	7.0	0.2	—	9.8	22 (typ.) 14 (min.)						18 (typ.) 6 (min.)						—	QQQ569	w	13.95
RMS-2L	+3	-3	800-1000	DC-200	7.0	0.2	—	8.4	24 (typ.) 16 (min.)						20 (typ.) 12 (min.)						—	TT240	w	6.95
RMS-5L	+3	-3	400-1400	DC-800	7.0	0.2	—	9.8	22 (typ.) 14 (min.)						22 (typ.) 6 (min.)						—	TT240	w	13.95

L = low range [f_L to $10f_L$]

M = mid range [$10f_L$ to $f_U/2$]
m = mid band [$2f_L$ to $f_U/2$]

U = upper range [$f_U/2$ to f_U]



Incorporates multi-layer monolithic ceramic substrates for moderate bandwidth and low cost RF/Microwave products

NOTES:

- \bar{x} Average of conversion loss at center of mid-band frequency ($f_L+f_U/4$)
- σ Standard deviation
- ◆ Aqueous washable. For non-aqueous requirements, LRMS units available in case style QQQ130.
- † Phase detection, positive polarity.
- * BLUE CELL™ mixers protected by U.S. Patents 5,534,830 5,640,132 5,640,134 5,640,699
- ** Protected under U.S. patent 6133525
- A. Environmental specifications and re-flow soldering information available in General Information Section.
- B. Units are non-hermetic unless otherwise noted. For details on case dimensions & finishes see "Case Styles & Outline Drawings".
- C. Prices and Specifications subject to change without notice.
- 1. Absolute maximum power, voltage and current ratings:
 - 1a. RF power, 50mW
 - 1b. Peak IF current, 40mA

pin connections

PORT	w	ht ¹	ld	le
LO	1	6	10	10
RF	4	3	5	6
IF	5	2	3	1
GND EXT.	2,3,6	1,4,5	all others	all others
DEMO BOARD	TB-03	TB-03	—	—

¹ pin connection physically same as w



The Design Engineers Search Engine
Provides Actual Data Instantly
At: <http://www.minicircuits.com>

In Stock... Immediate Delivery
For Custom Versions Of Standard Models
Consult Our Applications Dept.

